

Midwest Energy, Inc. Current Comments

APRIL 2022

Making energy work for YOU

Electric Vehicle Chargers Coming KDOT Awards Funding Through Volkswagen Mitigation Trust

When debating whether to purchase an electric vehicle (EV), a lack of public charging stations often creates “range anxiety,” the belief that one cannot drive an EV to their destination without the ability to charge their vehicle’s battery.

The Kansas Department of Transportation (KDOT) is helping resolve that issue by recently awarding \$2 million to install direct current (DC) fast-chargers along Interstate 70 and Interstate 35. The funds will come from Kansas’ Volkswagen Mitigation Trust Fund, when VW company settled with the EPA for cheating on emissions tests. Kansas received \$15.6 million to establish its trust fund.

Charging stations will be installed at:
I-70: Oakley - Mitten’s Travel Center
I-70: WaKeeney - 24/7 Travel Store
I-70: Russell - Fossil Station Convenience Store
I-70: Abilene - 24/7 Travel Store
I-70: Maple Hill - 24/7 Travel Store
I-35: Matfield Green service area - EZ Go #73
I-35: Belle Plaine service area - EZ Go #75



The Kansas Department of Transportation (KDOT) identifies “Priority EV Charging Station Locations” in green and “Priority EV Corridors” in yellow. The Location Numbers in each green area above do not represent KDOT’s priority ranking of the charger locations. Source: KDOT

To be eligible for funding, proposed locations had to be within five miles of a “priority corridor” exit. KDOT also identified 12 unserved “priority locations” along I-70 and I-35.

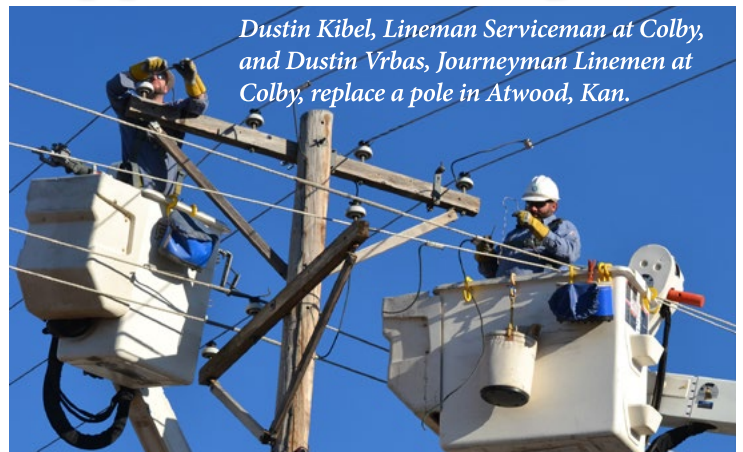
Locations agree to at least five years of service, equipment and installation requirements set forth by KDOT, and filing usage reports. The chargers are expected to be installed by the end of 2022.

April 11 is Co-op Lineman Appreciation Day

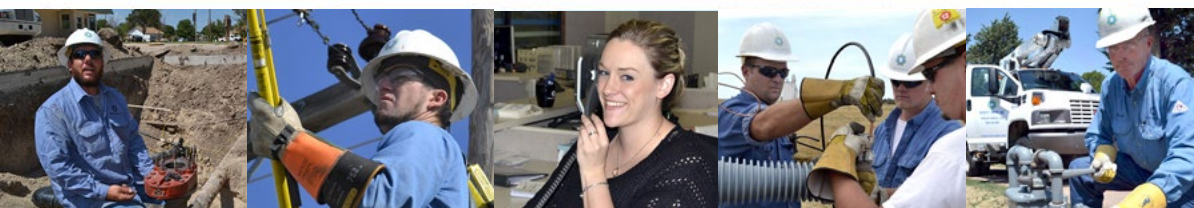
The National Rural Electric Cooperative Association recognizes the second Monday in April as Lineman Appreciation Day.

Different organizations recognize different dates for Lineman Appreciation Day; The International Brotherhood of Electrical Workers (IBEW) observes National Lineworker Appreciation Day on July 10, to honor the birthdate of its founder, Henry Miller.

Regardless of when it’s observed, we salute all Linemen, past and present, who go the extra mile in all conditions to keep the lights on. Thank you!



Dustin Kibel, Lineman Serviceman at Colby, and Dustin Vrbas, Journeymen Linemen at Colby, replace a pole in Atwood, Kan.



MIDWEST
ENERGY, INC.

30764-I-0184

Know What's Below...Always Call 811 Before You Dig

April is National Safe Digging Month. Before you start your next digging project, make sure to call 811 to get your underground utilities lines marked for free.

When you dial 811, your call is connected to Kansas One Call, which notifies the appropriate utility companies of your intent to dig. A locator will come to your site to designate the approximate location of any underground lines, pipes and cables. These areas will be marked with flags and paint, so you'll know where to dig.

When preparing to dig for any reason - planting trees, installing

fence posts, and for larger projects such as a new pool, call ahead at least two business days to give utilities adequate notice.

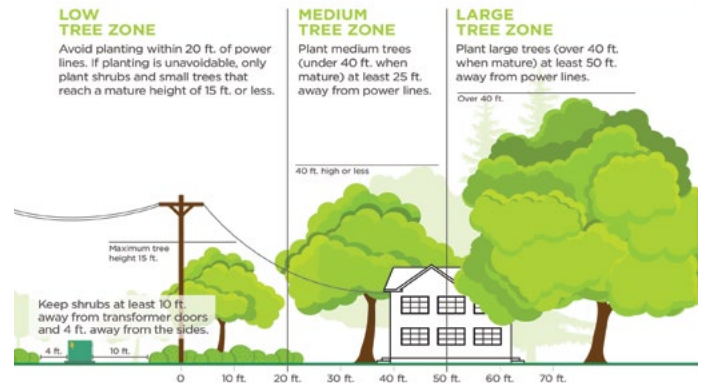
In Kansas, calling 811 is required by law, even for small projects. 811 reports that 40% of active diggers don't contact 811 because they think their project is too shallow to require it. Unfortunately, some lines may be buried just a few inches below the surface,

and that mistake can lead to costly and potentially dangerous consequences.

So call 811 before you dig. It's fast, it's free, and it's the law.

Plant Trees Safely

Before you dig, call 811 to locate buried utility lines.



Spring Storm Season Right Around the Corner

Don't let spring storms catch you by surprise. Prepare a storm kit to keep your family safe and comfortable in the event of a storm-related power outage.

In rare cases, your electricity could be out for several days. Prior planning is crucial. Here are some ideas of what to keep in your storm kit:

Water The Federal Emergency Management Agency (FEMA) recommends storing at least one gallon of water per person per day for drinking and sanitation purposes. Store those bottles in a cool, dark place.

Food Canned vegetables and soup, boxed cereal, peanut butter, and other nonperishable foods should be part of your kit. Avoid salty snacks or other foods that will make you thirsty. Store at least a three-day supply of food



and replace expired items as needed.

Chargers Having a full tank in your car will enable you to recharge your cell phones and other electronic devices while driving. A small solar-powered phone charger, or a backup battery, might be helpful.

First Aid Kit Bandages, antibiotic ointments, and other supplies are a must. If you take daily prescription medications,

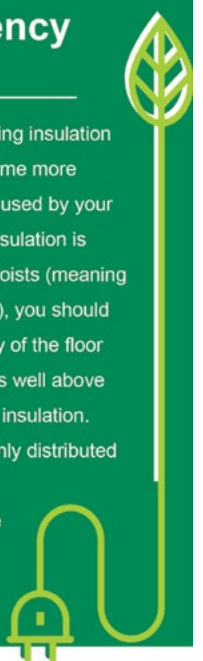
make sure you have enough in case the pharmacy is closed.

Other Supplies Keep a flashlight and warm blanket and/or sleeping bags for each family member. Have extra batteries to keep everything working.

Energy Efficiency Tip of the Month

Even in summer months, adding insulation to your attic can keep your home more comfortable and save energy used by your cooling system. If your attic insulation is level with or below your floor joists (meaning you can easily see your joists), you should add more. If you can't see any of the floor joists because the insulation is well above them, you likely have enough insulation. Attic insulation should be evenly distributed with no low spots. Make sure the areas along the eaves are adequately covered.

Source: energystar.gov



Atwood, KS • Colby, KS • Great Bend, KS • Hoxie, KS

Phillipsburg, KS • Scott City, KS • WaKeeney, KS

1-800-222-3121
www.mwenergy.com



Printed on Partially Re-Cycled Paper



1330 Canterbury • Hays, Kansas 67601