

Midwest Energy, Inc. Current Comments

April 2026

Making energy work for YOU

Plant Smart From the Start: Call 811 Before You Dig Be Aware of Overhead, Underground Utilities When Planting Trees

As winter fades and spring arrives, many people are eager to head outdoors and start new projects.

Whether you're planting a tree, installing a fence, building a deck, or starting a garden, spring projects often involve digging. Before you grab a shovel, remember to call Dig Safe at 811.

By dialing 811 at least two business days before digging, utility companies in the area will be notified of your plans. A professional locator will then identify the approximate location of buried gas, water, sewer, and electric lines that may be near your project. These lines will be clearly marked with flags or paint.

Even after utilities have been marked, it's important to dig carefully around those areas. Some lines may be buried at shallow depths where post drivers, shovels, and other tools can easily cause damage. No project is too small to require a call, no matter how shallow you think the digging will be. Calling 811 is fast, free, and it's Kansas law.

Look up! If your spring project includes planting trees, remember to look up as well as down. Tree placement matters if power lines are nearby.

Avoid planting trees within 20 feet of power lines. If planting within that distance is unavoidable, choose only small trees or shrubs.

Trees growing too close to power lines can create both reliability and safety concerns. To help prevent outages and hazards, Midwest Energy contracts full-time tree trimming crews to manage vegetation around electric lines. If trees grow too close to power lines, crews will trim branches to maintain safe clearance. In extreme cases, trees may need to be removed entirely.

Many of these issues can be avoided by following the "right tree, right place" principle and only selecting trees and shrubs that will remain a safe distance from power lines as they mature.

Spring projects should be enjoyable and safe. By calling 811 before digging and choosing appropriate locations for trees and shrubs, you help protect yourself, your property, and your

community's electric system. If you have questions about power lines on your property or need guidance on safe planting near electric equipment, please give us a call at 1-800-222-3121.

PLANT THE RIGHT TREE IN THE RIGHT PLACE

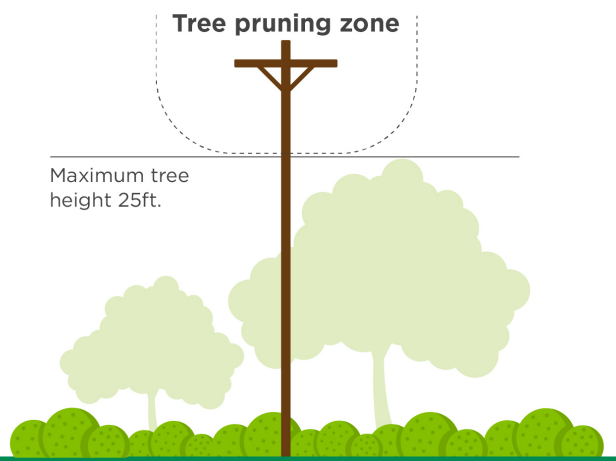
Avoid planting within 20 feet of power lines. When planting within 20 feet is unavoidable, use only shrubs and small trees.

Height/spread of no more than 25 feet such as:

- Crabapple
- Lilac
- Amur Maple



Be safe! Always call 811 before you dig to locate buried utility lines.



MIDWEST
ENERGY, INC.

30764-1-0290

Schedule a How\$mart® Audit Today

Midwest Energy's How\$mart Program helps customers make energy-efficiency improvements such as insulation, air sealing, heating and cooling systems, and commercial lighting.



After the audit, you choose a contractor to complete the improvements and the How\$mart program pays up to 100 percent of the project costs. Repayment is then made through energy

savings on your Midwest Energy bill plus a small surcharge.

For more information, visit our website at www.mwenergy.com or call us at 1-800-222-3121 to schedule an audit.

To get started, schedule an energy audit. A professional auditor will visit your home or business to identify systems that need upgrading and estimate potential energy savings.

Midwest Energy Complaint Process

Midwest Energy is a self-regulated cooperative. Under Kansas law, final authority for handling member complaints rests with the Board of Directors (not the Kansas Corporation Commission). Here are the steps to follow should you wish to file a complaint

Step 1: Attempt to resolve the issue at the earliest opportunity with a Midwest Energy employee. Members are encouraged, but not required, to submit complaints and evidence in writing.

Step 2: If the complaint cannot be resolved by a Midwest Energy employee, members may contact Justin MacDonald, Vice President of Customer Service.

Step 3: If the Vice President of Customer Service is unable

to resolve the issue, escalate the complaint to the Chief Executive Officer. The CEO will advise the member of his/her decision.

Step 4: If the CEO is unable to resolve the matter satisfactorily, the member may escalate the complaint to the Chair of the Board of Directors. At the Chair's discretion, the matter may be placed on the agenda for consideration at the Board's next meeting.

You may contact us at 1-800-222-3121 to express any concerns. To contact the Board Chair, please visit www.mwenergy.com and click About > Transparency, to find a direct email contact link.

Thank a Lineman!



National Lineman Appreciation Day is April 18

ENERGY EFFICIENCY TIP OF THE MONTH

As we prepare for the seasonal shift, remember to set your ceiling fan rotation accordingly. In winter months (or whenever your home heating system is running), fan blades should rotate clockwise, which produces an updraft that pushes warm air down. In summer months (or whenever your home cooling system is running), blades should rotate counterclockwise, which produces a downdraft or windchill effect that makes you feel cooler. When used correctly, ceiling fans can boost comfort and allow you to adjust the thermostat a few degrees for energy savings.

Source: energy.gov



Atwood, KS • Colby, KS • Great Bend, KS • Hays, KS

Phillipsburg, KS • Scott City, KS • WaKeeney, KS

1-800-222-3121
www.mwenergy.com



Printed on Partially Re-Cycled Paper 

1330 Canterbury • Hays, Kansas 67601