

# Midwest Energy, Inc. Current Comments

September 2022

Making energy work for YOU

## Crews Make Progress on Upgrade Projects

In addition to keeping up with service requests and making storm repairs, Midwest Energy electric and gas crews also work on various construction projects throughout the year to improve system safety and reliability.

This summer, Hays crews have been converting voltage in downtown Hays from 2,400 volts to 7,200 volts. This upgrade improves system reliability and performance in the area. Crews are completing this project a few blocks at a time and have been working during the night to minimize disruption to businesses and customers.

lematic,” Colby Operations Manager Brian McKinney said. “Older power lines break and burn down more easily in inclement weather. Aluminum lines are lighter and more reliable.”

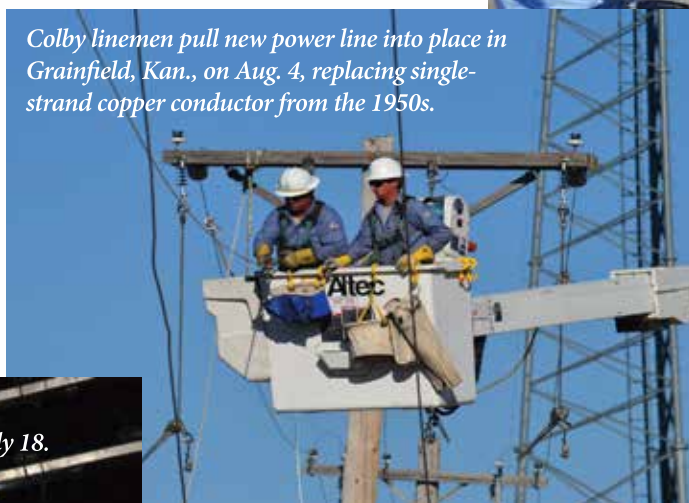
McKinney said these replacements were completed over several weeks. About a half-mile of cop-

area involves the relocation of a 115kV transmission line extending from the Chetolah Creek Substation in southeast Hays to the Knoll



Gas construction crews from Phillipsburg and Plainville install new gas line in Stockton on May 14.

Colby linemen pull new power line into place in Grainfield, Kan., on Aug. 4, replacing single-strand copper conductor from the 1950s.



Hays linemen work after midnight on a voltage conversion project on July 18.



Crews in the Colby district have been working on replacing single-strand copper power lines installed in the 1950s with modern braided aluminum conductor.

“Aging infrastructure can be prob-

per line in Selden will also be replaced later this year.

Gas crews throughout the system have been working on the later stages of a decade-long project to remove dozens of miles of aged bare steel gas line from beneath alleys and fields throughout the service area, replacing them with corrosion-resistant polyethylene pipe.

A longer-term project in the Hays

operations as Hays continues to grow.

The next step in this project will be securing right-of-way corridors along the route in which the transmission line will be constructed and maintained. Negotiations are ongoing with landowners on the route. Though no timeline for construction has been set, it's likely that construction will take one to two years to complete.



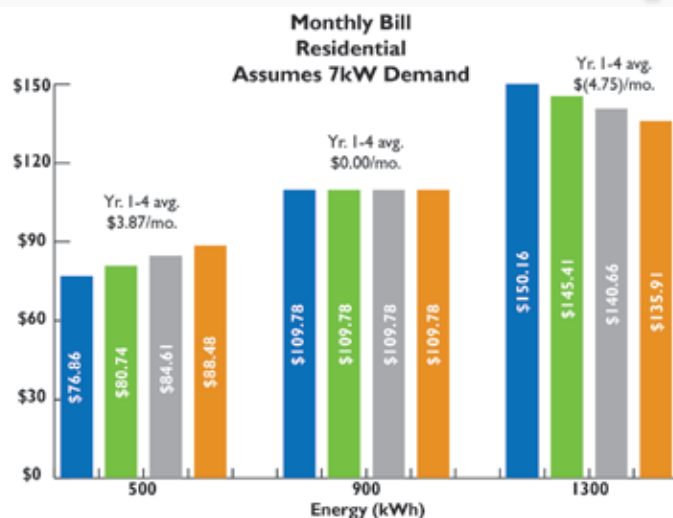
MidwestEnergy

# Proposed Rate Change Revenue-Neutral for Co-op

Midwest Energy is considering adoption of a three-part rate structure for residential and small commercial (General Service Small) electric rate classes. The rates consist of a customer charge, energy charge and a demand charge, and would begin Jan. 1, 2023.

The proposed rate changes would be revenue-neutral for the cooperative, and would be phased in over a period of four years. As demand charges are introduced, energy charges would decline each year, offsetting much (in some cases, all) of the demand charge, resulting in a \$0 monthly increase for an average residential customer.

Demand charges would be a monthly charge based on "peak demand," or the maximum number of kilowatts a customer used at a specific time. In the summer months of June 1 through September 30, demand would be billed based on peak demand between 3 p.m. to 7 p.m. The rest of the year, the billed demand would



(Above) The above graph assumes no changes in a customer's energy usage and an average demand of 7kW. Your actual demand could be higher or lower and will be affected by changes in energy use patterns.

be based on whenever peak demand was reached during the month. For more information, visit [www.mwenergy.com/residential/demand\\_rates](http://www.mwenergy.com/residential/demand_rates).

## Community Fund Applications Due Oct. 1

Midwest Energy's Community Fund Grants are awarded semi-annually to charitable, educational and nonprofit organizations in the co-op's service area. The fall application deadline is right around the corner on Oct. 1.

The Community Fund supports a variety of projects, from park and public safety improvements to leadership and business club events to educational programs. Those requesting funds for tangible items, for long-lived community assets or their improvements, are preferred over expendable items (like fireworks or event prizes).

Grants range from \$100 to \$1,000, with funding decisions made by local committees in each of Midwest's five geographic districts.

Committees are comprised of two Midwest Energy employees and five to seven area community members.

In the spring of 2022, Midwest distributed \$41,797.50 to 95 projects. Applications were received from 52 communities representing 27 counties.

For projects with needs larger than typical Community Fund grants, Impact Grants are available. Five \$5,000 grants are awarded each fall to such projects. Unlike Community Fund Grants, Impact Grants require a matching contribution of \$5,000 to be considered. Applications not awarded an Impact Grant will be considered for a Community Fund Grant.

The application is easy to fill out and is available online at [mwenergy.com](http://mwenergy.com) under the "Community" tab. All eligible organizations are encouraged to apply.

**Energy Efficiency**  
Tip of the Month

Water heating accounts for a large portion of home energy bills. To save energy (and money!) used for water heating, repair any leaky faucets, install low-flow fixtures and insulate accessible hot water lines. When it's time to purchase a new washing machine or dishwasher, look for models that are ENERGY STAR®-certified.

Source: Dept. of Energy

Atwood, KS • Colby, KS • Great Bend, KS • Hays, KS

Phillipsburg, KS • Scott City, KS • WaKeeney, KS

**1-800-222-3121**  
**[www.mwenergy.com](http://www.mwenergy.com)**



Printed on Partially Re-Cycled Paper



**1330 Canterbury • Hays, Kansas 67601**